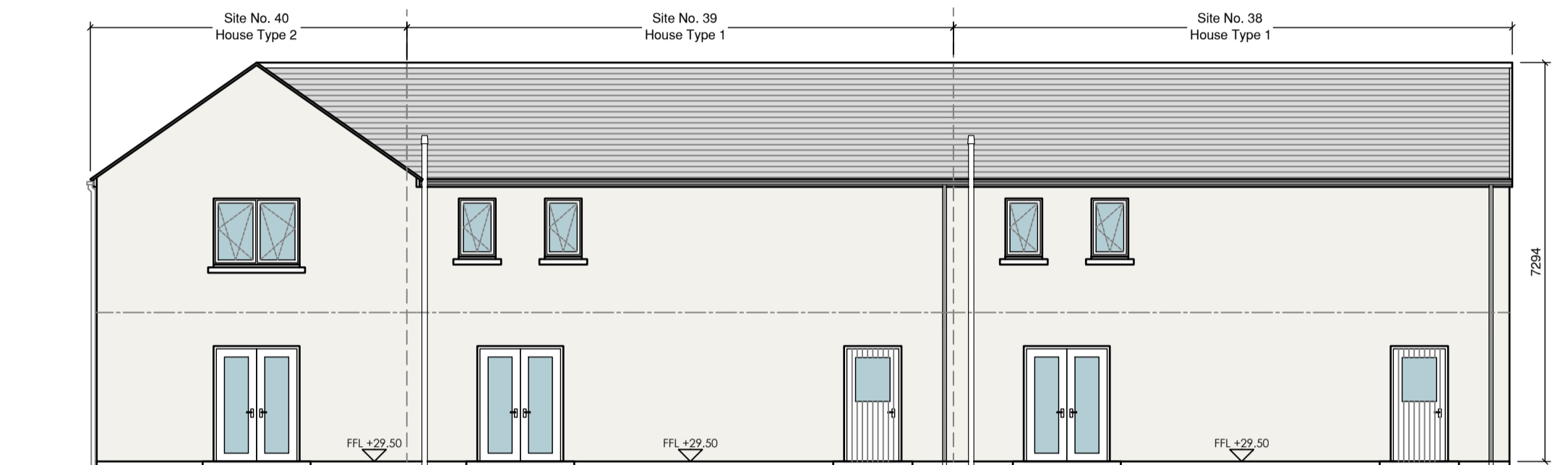




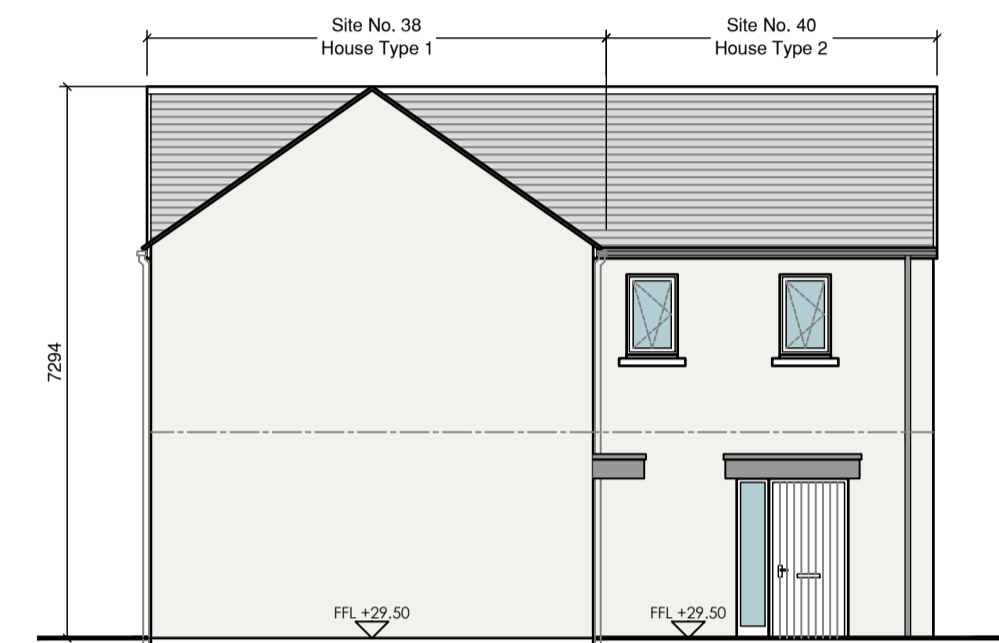
Front Elevation



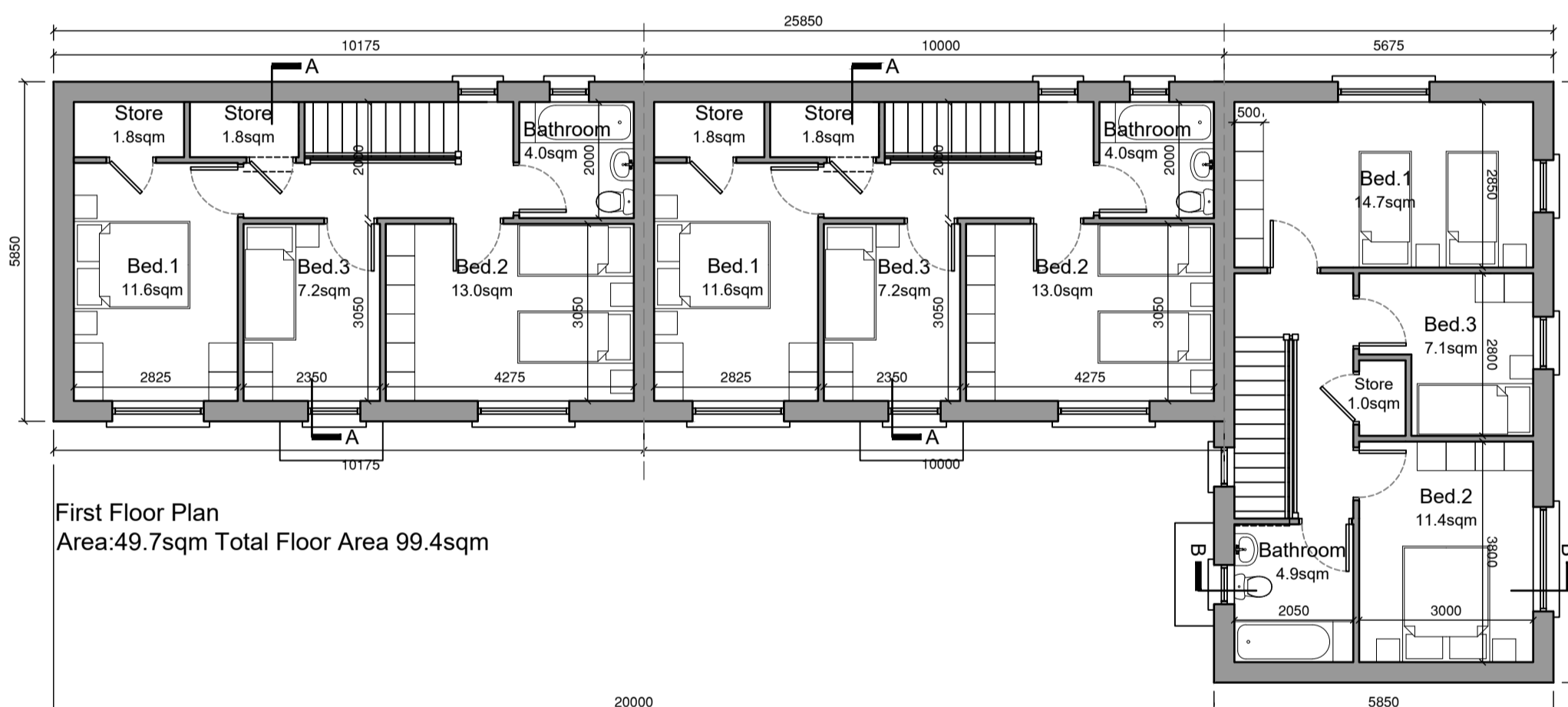
Side Elevation



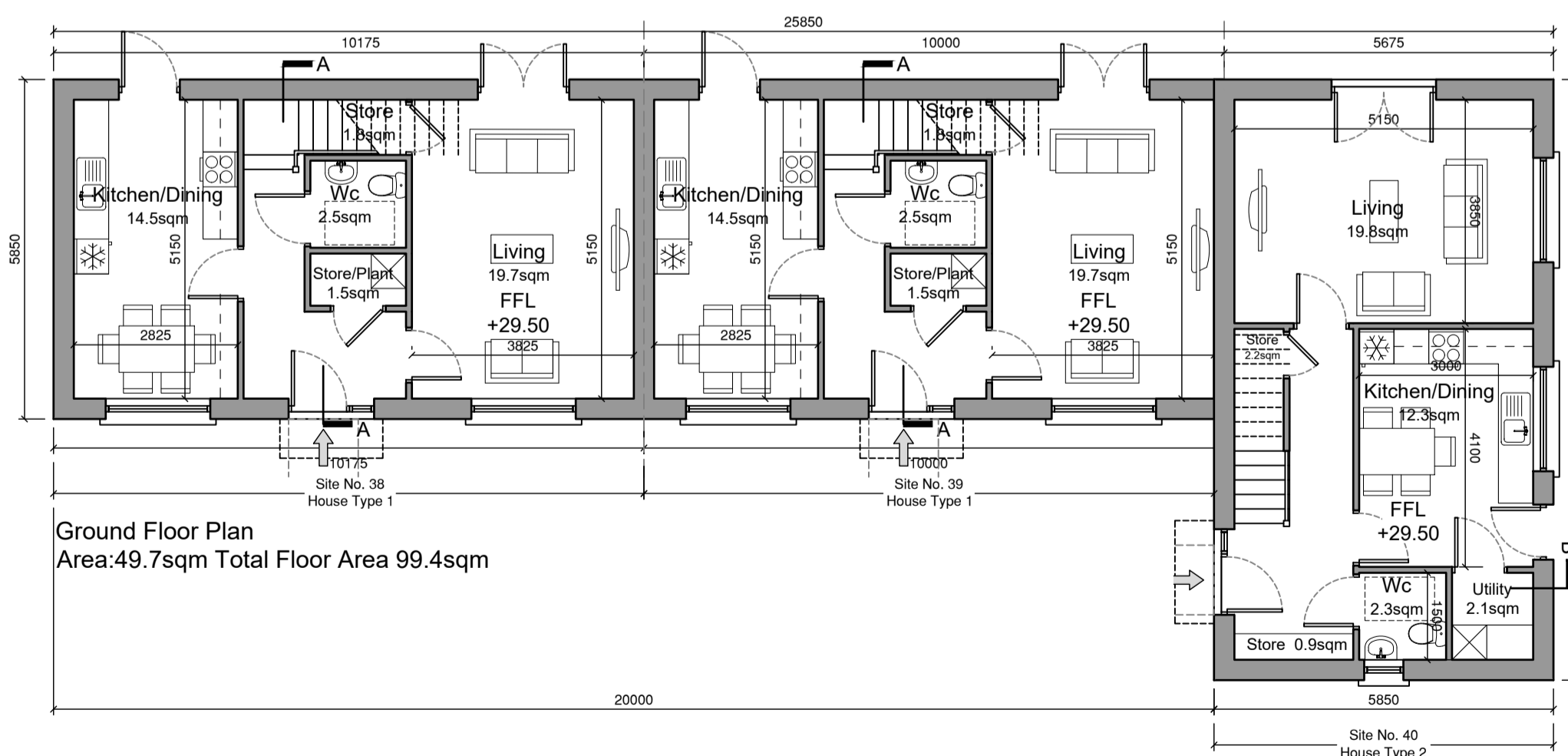
Rear Elevation



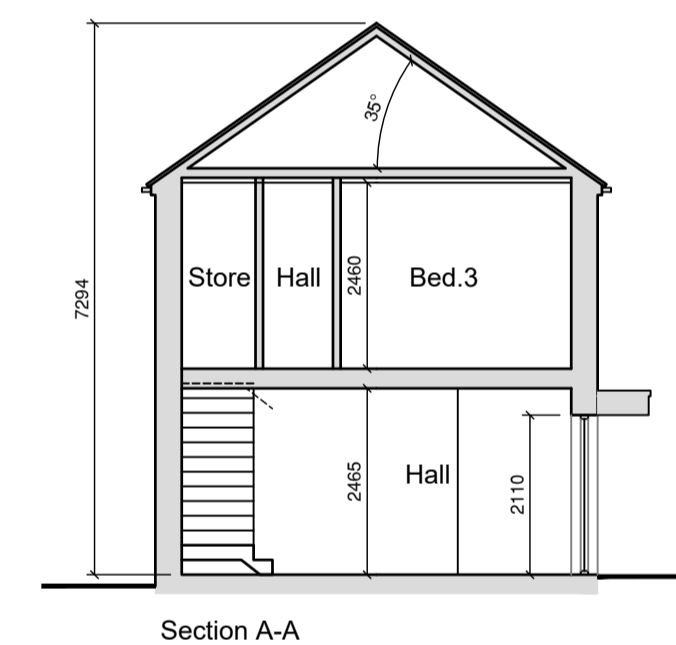
Side Elevation



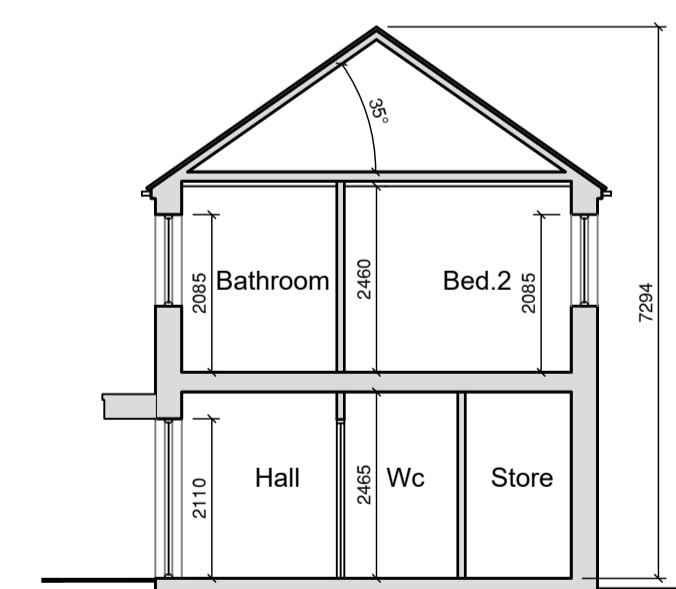
First Floor Plan
Area:49.7sqm Total Floor Area 99.4sqm



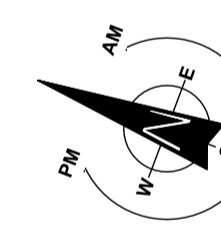
Ground Floor Plan
Area:49.7sqm Total Floor Area 99.4sqm



Section A-A



Section B-B



House Type 1

Quality Housing for Sustainable Communities Standards

3 Bedroom / 5 Person House (2 Storey) Areas:					
	Target Gross Floor Areas	Min-Main Living Room	Aggregate Living Area	Aggregate Bedroom Area	Storage
	(m ²)	(m ²)	(m ²)	(m ²)	(m ²)
Required	92 sqm	13 sqm	34 sqm	32 sqm	5 sqm
Provided	99.4sqm	19.7 sqm	34.2sqm	31.8 sqm	5.4 sqm

3 Bedroom / 5 Person (2 Storey) Widths:					
	Single Bedroom	Double Bedroom	Living Rm [1 Bed]	Living Rm [2 Bed]	Living Rm [3 Bed]
	(m)	(m)	(m)	(m)	(m)
Required	2.1m	2.8m	3.3m	3.6m	3.8m
Provided	2.35 m	2.825 m	-	-	3.825 m

House Type 2

Quality Housing for Sustainable Communities Standards

3 Bedroom / 5 Person House (2 Storey) Areas:					
	Target Gross Floor Areas	Min-Main Living Room	Aggregate Living Area	Aggregate Bedroom Area	Storage
	(m ²)	(m ²)	(m ²)	(m ²)	(m ²)
Required	92 sqm	13 sqm	34 sqm	32 sqm	5 sqm
Provided	99.4sqm	19.8 sqm	34.2sqm	33.2sqm	4.1 sqm

3 Bedroom / 5 Person (2 Storey) Widths:					
	Single Bedroom	Double Bedroom	Living Rm [1 Bed]	Living Rm [2 Bed]	Living Rm [3 Bed]
	(m)	(m)	(m)	(m)	(m)
Required	2.1m	2.8m	3.3m	3.6m	3.8m
Provided	2.35 m	2.825 m	-	-	3.85 m

External Finishes Schedule

Roof:	Blue/Black Fibre cement Slate
Walls:	White External Render - Smooth/dashed
Windows & Doors:	Grey AluClad
Rain Water Goods:	Black uPVC
Canopy:	Grey Aluminium Fascia.

Keyplan

